

bod'or

UNDER-COVER
DOORFRAMES
25

Timeless. Seamless. Effortless.

Matchless.

The latest generation of

Under-Cover Doorframes is ready.



2008

UNDER-COVER 1.0



2012

RE-UNDER-COVER



2016

UNDER-COVER 2.0



2019

UNDER-COVER 25
RE-UNDER-COVER

EVOLUTION.NONSTOP

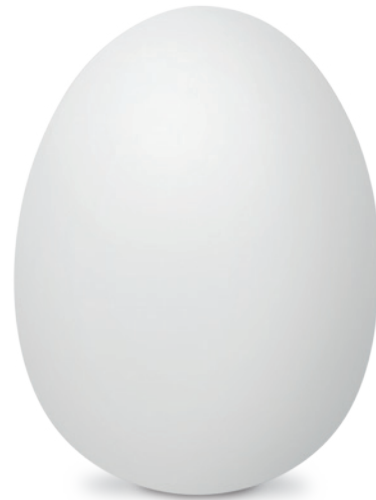
Under-Cover Doorframes 25.

Ready for today and tomorrow.

Can something that looks perfect be brought to perfection?

Evolution shows it can. From generation to generation. Under-Cover Doorframes 25 also follow this principle. The new Generation 25 offers new, innovative details. Arrived at from practical experience. Innovations - invisible on the inside, unmissable for the craftsman. The L-shape profile replaces the U-shape. Extra-strong corner connectors ensure the stability of angles and provide a perfect fit in all dimensions. Everything can be assembled in advance, with simplified processes, smart fitting aids and online support. The goal: A perfect end result with major time savings.

We understand craftsmanship.

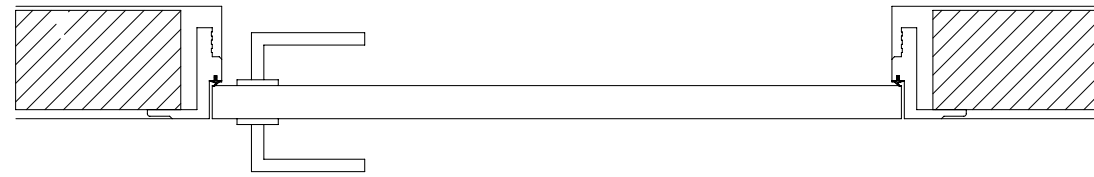


FOCUS ON ESSENTIALS.

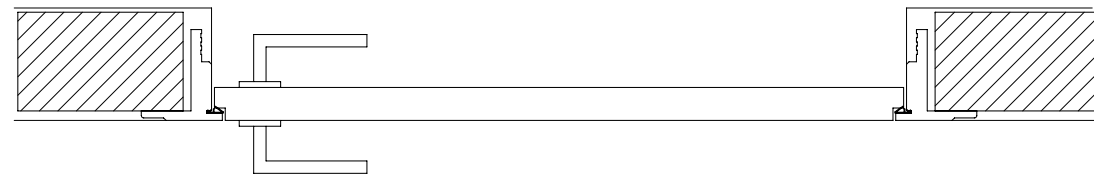
Why distort the essence of a design by adding non-essentials?

Who actually needs visible door frames? Under-Cover Doorframes make it easy for you to conceal them in the design of a room. Uncompromising on quality and on materials. Well aware that high-quality design essentially does not only follow form, but in particular function too.

You will see: We have provided a proper frame.



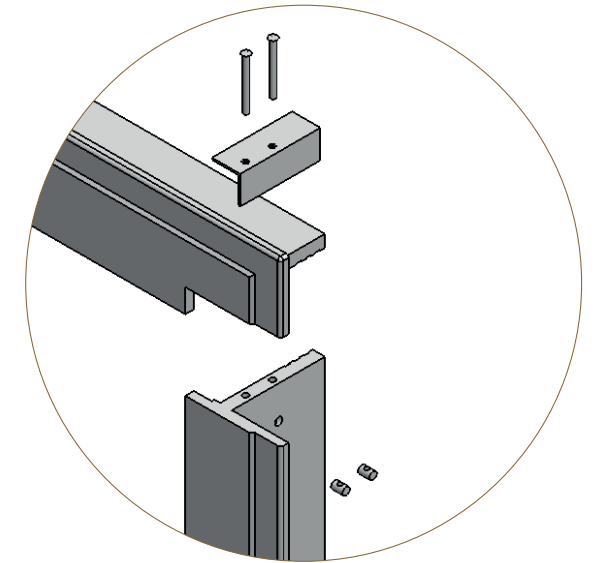
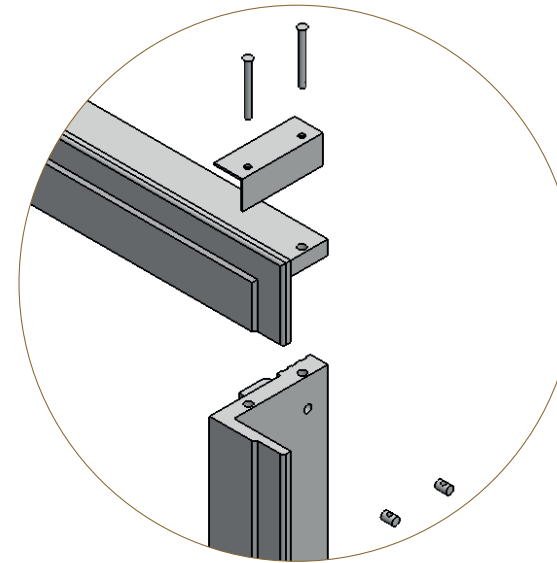
Under-Cover



Re-Under-Cover

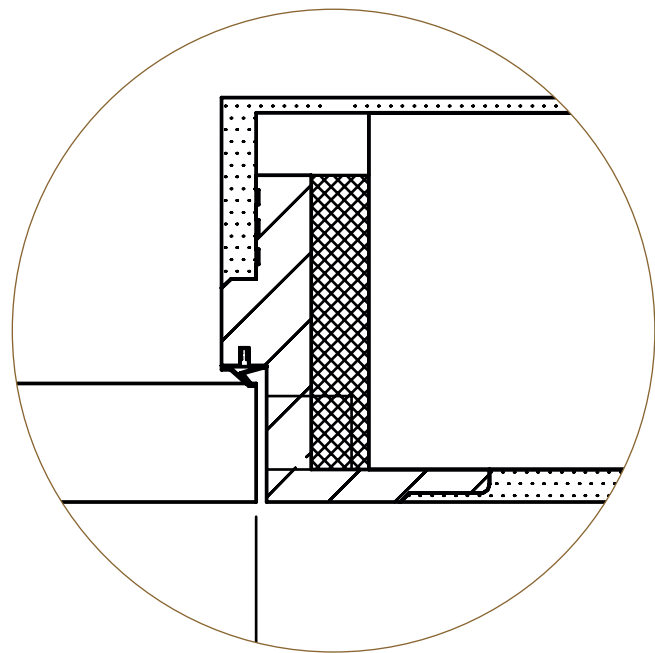
A DESIGN WITH A FUTURE

An L instead of a U. Flexibility instead of rigidity. The L-shape of the concealed frame elements provides greater flexibility in terms of dimensions and makes handling easier. The L-profile can be pre-assembled (except when extra-wide, double-door) and can therefore be processed faster. The L will be the fitting of the future.



HIDDEN STRENGTHS

Another effect of evolution: The new reinforced fiber composite is now extra-tough, while also being permanently resistant to damp and temperature extremes. New enhanced corner connectors provide a constant L-shape with solid angles and create size accuracy. Both of these new elements are important factors for the stability of flush mountings. A guarantee for fitting without cracks.



- maximum height (shell dimensions) 2950 mm
- maximum width (shell dimensions) 2400 mm
- minimum finished wall thickness 120 mm

REDEFINING THE FRAME SYSTEM

Clear separation. While focusing on benefits. Our definition of the frame system using Under-Cover Doorframes 25. The new mortar protection for the wall mounting plate prevents any remaining traces after plastering work and keeps the door hinges clean.



It is not what is **added**,
but what is **removed**,
that enables **more**.

Discover the
invisible



THE PATH TO TEAMWORK

Bod'or KTM knows the worlds of different crafts. What they require, their similarities, their differences. Our 'We connect' initiative will help to optimise the interfaces between different crafts. Good for each trade individually. Perfect for the overall result. This is true collaboration - that creates teamwork!

Discover more about Under-Cover Doorframes 25 at: www.undercover-doorframes.com

bod'or

WWW.BODOR.NL/WWW.BODOR.EU

Bod'or BV Nederland
Broekstraat 1
NL-5711 CT Someren
Nederland
T: + 31 (0)493 520 240
E: info@bodor.nl

Bod'or International
Benzstrasse 17
D-46395 Bocholt
Germany
T: + 49 (0) 2871 - 21450
E: info@bodor.eu